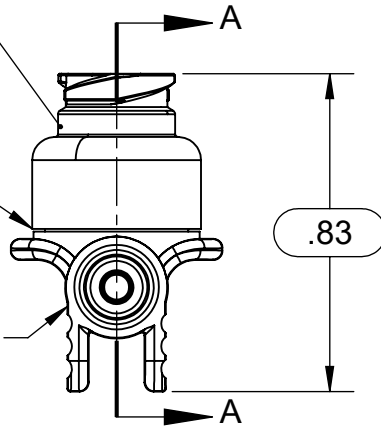


DRAWING NO. <b>2454640XX</b>	REV <b>F</b>	<b>Manufacturing Drawing</b>	REVISION HISTORY			
			REV	DESCRIPTION (ECO)	DATE	APPROVED
			E	UPDATE WELD HEIGHT ECO 8607	05/17/19	AK
			F	ADD ALTERNATE STEM ECO 11307	09/27/21	SR

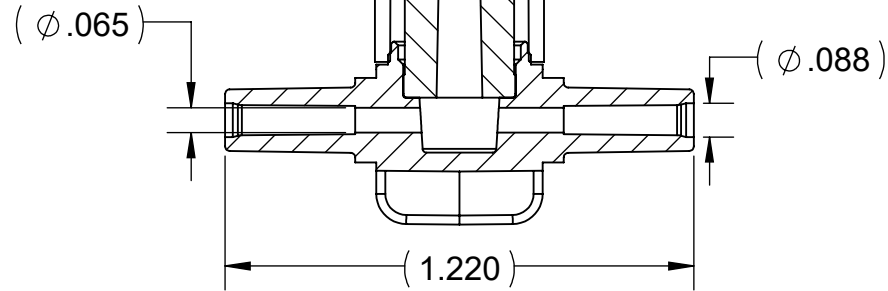
P/N 245620024  
LUER BODY  
SWABABLE

ULTRASONIC  
WELD

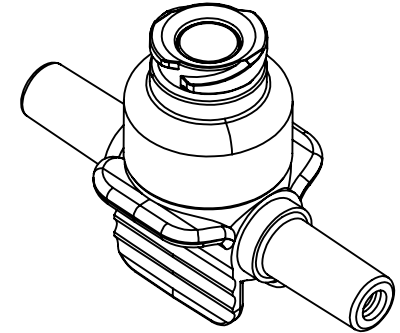
P/N 245464124  
T-PORT



24530001XH  
SWABABLE STEM



SECTION A-A




NOTES:

1. SUFFIX INDICATES MATERIAL:  
24 - CLEAR POLYCARBONATE MAKROLON RX1805-451118.
2. ASSEMBLE PER WORK ORDER.
3. CRITICAL DIMENSIONS ARE CIRCLED.
4. USAGE: WILL FIT 2.1 MM (.083") O.D. TUBING.

**MOLDED PARTS:**  
GATES, PARTING LINES, AND FLASH PER QUALITY CRITERIA

**PROPRIETARY AND CONFIDENTIAL**  
THE INFORMATION CONTAINED IN THIS DRAWING IS SOLE PROPERTY OF HALKEY-ROBERTS CORPORATION ST. PETERSBURG, FL. ANY REPRODUCTION IN PART OR AS A WHOLE WITHOUT THE WRITTEN PERMISSION OF HALKEY-ROBERTS CORPORATION IS PROHIBITED.

DRAWN BY DMC		DATE 4/3/2012	HR® Halkey-Roberts®		
APPROVED BY		DATE			
MATERIAL SEE NOTES			TITLE		
FINISH			2.0mm Swabable "T" Port		
UNLESS OTHERWISE SPECIFIED: DIMENSIONS ARE IN INCHES TOLERANCES: ANGULAR: ± 1° TWO PLACE DECIMAL ± .01 THREE PLACE DECIMAL ± .005		THIRD ANGLE PROJECTION	SIZE A	DRAWING NO. 2454640XX	REV F
			SCALE 2:1	DO NOT SCALE DRAWING	SHEET 1 OF 1